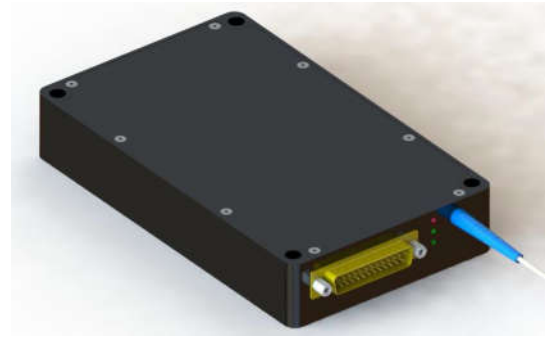


ASE LIGHT SOURCE

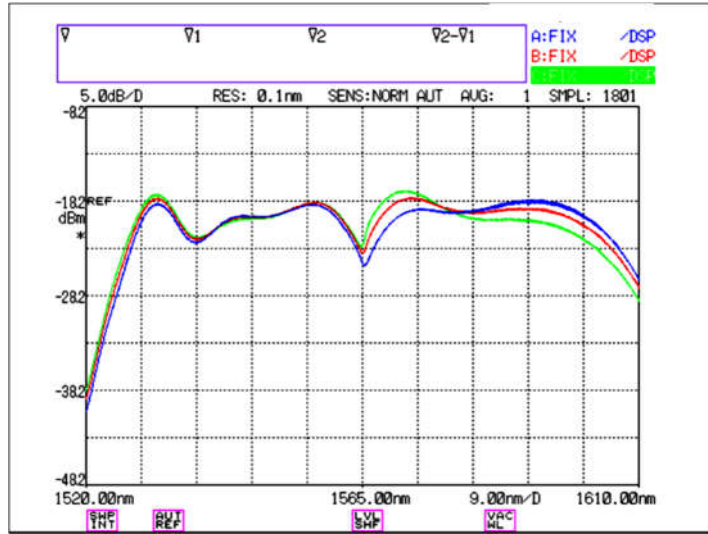
Model Number: **ASE-CLO-RS-16-FCA**
 Product Code: **1327**
Micro Processor Controlled
Amplified Spontaneous Emission Source



Specifications:

| Parameters | Specifications |
|-----------------------------------------|--------------------------------------------------|
| Wavelength Range | 1530 – 1605nm |
| Spectral Flattening Filter | Not included |
| Output Power | +16 dBm, +13 dBm in C-band and +13 dBm in L-band |
| Optical Output Fiber | 900um loose tube, FC/APC, red, 1 meter, SMF-28 |
| Output Power Monitoring Range | +10 to +17 dBm |
| Output Power Measurement Accuracy | ≤ +/- 0.3 dB, 1550 nm |
| Polarization Dependence of Output Power | ≤ 0.3 dB |
| Control and Communication Interface | RS-232, RS232 Voltage Level |
| Dimension | 170 x 100 x 30 mm |
| Power Input | +5 VDC +/- 5% |
| Electrical Interface Connector | PN: MD25M2000/AA, 25-PIN |
| Operational Case Temperature Range | 0 to +60 °C |
| Mode of Operation | ACC (constant pump current control) |

ASE LIGHT SOURCE




Typical Optical Spectra of ASE Output, 0°C (blue trace), +25°C (red trace), and +60°C (green trace) Case Temperature

Electrical connector:

Part number: DB25

| Pin No. | Description | Pin No. | Description |
|---------|---------------------|---------|------------------|
| 1 | +5Vin | 14 | GROUND |
| 2 | GROUND | 15 | CUSTOMER TRIGGER |
| 3 | FAN OUT | 16 | POWER ON |
| 4 | RS232 TX | 17 | LASER ON |
| 5 | RS232 RX | 18 | ALARM SIGNAL |
| 6 | PUMP ENABLE/DISABLE | 19 | +5VD |
| 7 | INPUT POWER ALARM | 20 | GROUND |
| 8 | OUTPUT POWER ALARM | 21 | +5Vin |
| 9 | PUMP TEMP ALARM | 22 | GROUND |
| 10 | PUMP BIAS ALARM | 23 | DOWNLOAD |
| 11 | CASE TEMP ALARM | 24 | RESET |
| 12 | LED ON | 25 | - |
| 13 | PUMP ENABLE ALARM | | |

Ordering Information:



800 Village Walk #316
 Guilford, CT 06437
 Ph: 203-401-8093
 Email orders to: sales@xsoptix.com
 Fax orders to: 800-878-7282

