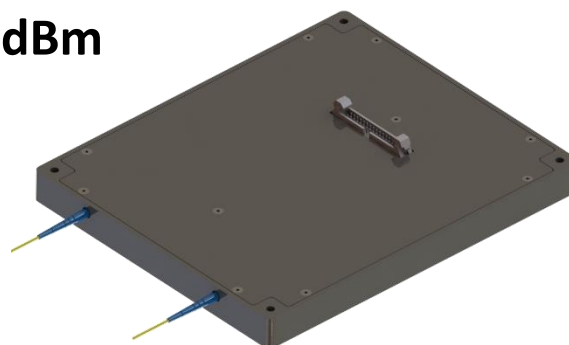


O-Band Broadband Source, 17 dBm

Model Number: ASE-CW-1300-RS-17-FCA

Product Code: 1912



Specifications:

Doc#: NP-TS-2611 November, 2023

Parameters	Specifications
Optimized Wavelength Range	1270 – 1340 nm
Spectral Flattening Filter	Not included
Output Power	+17 dBm
Output Fiber	FC/APC, SMF-28
Output Power Measurement Accuracy	≤ +/- 0.3 dB, 1300 nm
Control and Communication Interface	RS-232
Dimension	7 x 5.8 x 0.59 inch [178 x 147 x 15 mm]
DC Input voltage	12 VDC +/- 5%
Electrical Power Consumption	≤ 15 W
Operational Case Temperature Range	+5 to +45°C
Storage Temperature Range	-10 to +70°C

Ordering Information:



800 Village Walk #316
 Guilford, CT 06437
 Ph: 203-401-8093

Email orders to: sales@xsoptix.com
 Fax orders to: 800-878-7282