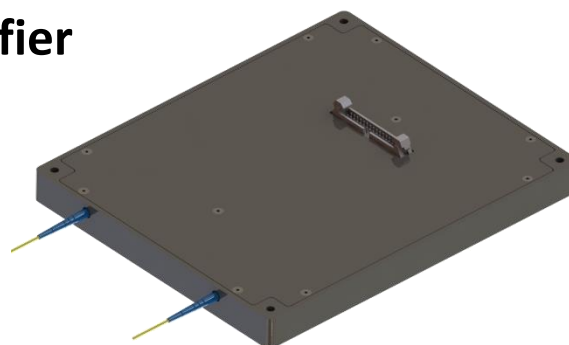


BISMUTH DOPED FIBER AMPLIFIER

20 dBm Output, O-Band Amplifier

Model Number: **BDFA-CW-1300-RS-20-17-FCA**

Product Code: **1912**




Specifications:

Doc#: NP-TS-2610 November, 2023

Parameters	Specifications
Optimized Wavelength Range	1270 – 1340 nm
Gain Flattening Filter	Not included
Signal Input Power	0 to +15 dBm, 1300 nm typical
Optical Gain	17 dB, tested with +3 dBm input at 1300 nm
Small Signal Gain, -30 dBm input	25 dB typical, tested with -30 dBm input at 1300 nm
Optical Input / Output Fiber	FC/APC, SMF-28
Input Power Monitoring Range	-30 dBm to +10 dBm
Output Power Monitoring Range	-5 to +20 dBm
Input Power Measurement Accuracy	≤ +/- 0.3 dB, 1300 nm
Output Power Measurement Accuracy	≤ +/- 0.3 dB, 1300 nm
Noise Figure	6.0 dB typical, -30 dBm 1300 nm input, ≥ 25 dB signal gain
Control and Communication Interface	RS-232
Dimension	7 x 5.8 x 0.59 inch [178 x 147 x 15 mm]
DC Input voltage	12 VDC +/- 5%
Electrical Power Consumption	≤ 15 W
Operational Case Temperature Range	+5 to +45°C
Storage Temperature Range	-10 to +70°C

Ordering Information:



800 Village Walk #316
 Guilford, CT 06437
 Ph: 203-401-8093

Email orders to: sales@xsoptix.com
 Fax orders to: 800-878-7282

Proprietary Information of Nuphoton Technologies
 Manufactured in the USA