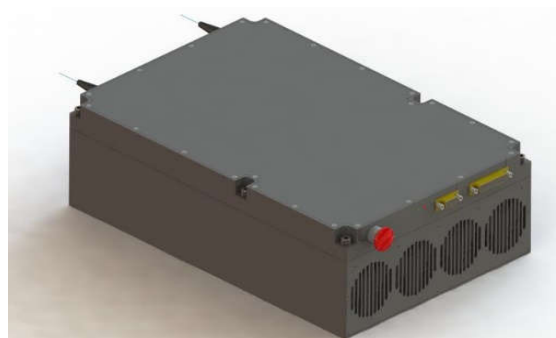


Model Number: **EDFA-CW-C0-RS-42.6-42.6-FCA**

Product Code: **1701**

Micro Processor Controlled EDFA



Specifications:

Parameters	Specifications
Wavelength Range	1545 – 1565nm, single channel, not a single frequency narrow linewidth laser
Gain Flattening Filter	Not included
Output Power	Up to +42.6 dBm, tested with 1560 nm, 0 dBm input
Gain	Up to 42.6 dB, tested with 1560 nm, 0 dBm input
Optical Input Fiber	900um loose tube, FC/APC, blue, 1 meter, SMF-28
Optical Output Fiber	900um loose tube, FC/APC, red, 1 meter, SMF-28
Input Power Monitoring Range	-10 dBm to +10 dBm
Output Power Monitoring Range	+23 to +43 dBm
Input Power Measurement Accuracy	≤ +/- 0.5 dB, 1560 nm
Output Power Measurement Accuracy	≤ +/- 0.5 dB, 1560 nm
Noise Figure	≤ 6.5 dB, tested at 42 dB gain, 1560 nm, 0 dBm input
Control and Communication Interface	RS-232, RS232 Voltage Level
Dimension	381 x 254 x 115 (including heat sink)
Power Input	+28 VDC +/- 5%
Electrical Interface Connector	PN: 173-E25-213R001, 173-E09-213R001
Operational Case Temperature Range	0 to +50 °C
Mode of Operation	ACC (constant pump current control), AOPC (constant output power control)

ERBIUM DOPED FIBER AMPLIFIER

Electrical connector:

DB-9 CONNECTOR

Part number: 173-E09-213R001

Pin No.	Description
2	RS232- TX
3	RS232- RX
5	GND

DB-25 CONNECTOR

Part number: 173-E25-213R001

Pin No.	Description	Pin No.	Description
1	DGND	14	DGND
2	+5VF	15	DGND
3	BOOSTER PUMP TEMP ALARM	16	DGND
4	LINE LED OUT	17	DGND
5	LASER LED OUT	18	DGND
6	RESET INPUT	19	DGND
7	HARDWARE LASER SHUTDOWN	20	+28VIN
8	9WPUMP TEMP ALARM	21	+28VIN
9	DGND	22	+28VIN
10	LOSS OUTPUT ALARM SIGNAL	23	+28VIN
11	PRE-AMP TEMP ALARM	24	+28VIN
12	CASE-TEMP ALARM	25	+28VIN
13	LASER DIODE ENABLE/ DISABLE		

Ordering Information:



800 Village Walk #316
 Guilford, CT 06437
 Ph: 203-401-8093

Email orders to: sales@xsoptix.com
 Fax orders to: 800-878-7282

ERBIUM DOPED FIBER AMPLIFIER



Proprietary Information of Nuphoton Technologies
Manufactured in the USA