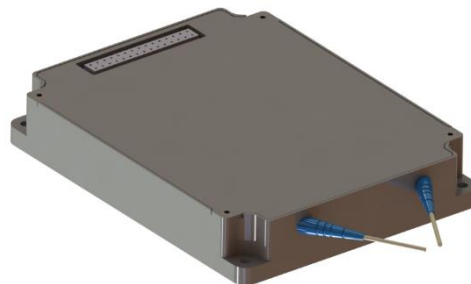


ERBIUM DOPED FIBER AMPLIFIER

34 dBm EDFA

Model Number: EDFA-CW-C0-SMR-34-40-FCA

Product Code: 1912



Specifications:

Doc#: NP-TS-2622 December 14, 2023

Parameters	Specifications
Optimized Wavelength Range	1540 – 1565 nm
Gain Flattening Filter	Not included
Optical Input Signal	-10 to +10 dBm average power, 1550 nm
Output Power	+34 dBm, tested with 1550nm, -6 dBm input
Gain	30 dB to 40 dB, tested with 1550 nm, -6 dBm
Optical Input Fiber	0.9mm OD, FC/APC cable, 0.9-1.1 meter
Optical Output Fiber	0.9mm OD, FC/APC cable, 0.9-1.1 meter
Input Power Monitoring Range	Included
Output Power Monitoring Range	Included, +20 to +34 dBm, calibrated with continuous-wave 1550 nm
Noise Figure	≤ 6.0 dB, tested with 1550 nm, -6 dBm input and +34 dBm output power operation
Output Power Measurement Accuracy	≤ +/- 0.3 dB, calibrated with 1550 nm continuous-wave output
Optical Input Isolator	Included
Optical Output Isolator	Included
Control and Communication Interface	RS-232, UART LVTTTL Level from unit itself, RS-232 level from the external breakout interface card PCB-1912-IFC
Dimension	5.12 x 4.92 x 0.59 inch [130 x 125 x 15 mm]
Power Input	+5 to +5.25 VDC
Operational Case Temperature Range	+5 to +60°C
Mode of Operation	ACC (constant pump current control) AOPC (constant output power control)
Electrical Power Consumption	≤ 30 W

Ordering Information:



800 Village Walk #316
 Guilford, CT 06437
 Ph: 203-401-8093

Email orders to: sales@xsoptix.com
 Fax orders to: 800-878-7282

Proprietary Information of Nuphoton Technologies
 Manufactured in the USA