

# ERBIUM DOPED FIBER LASER

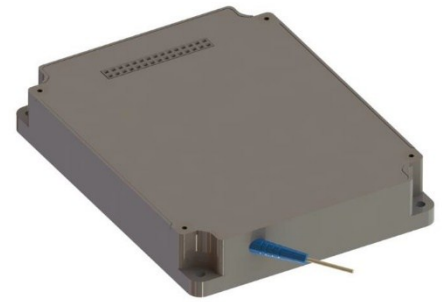


Model Number: **EDFL-Nano-1550-2-3-600-FCA**

Product Code: **1825**

**Micro Processor Controlled**

**Nanosecond Fiber Laser Module**



## Specifications:

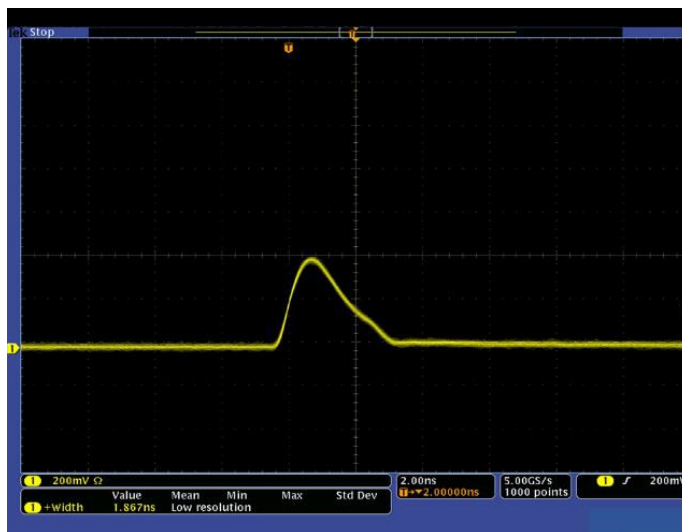
Parameters	Specifications
Center Wavelength	1550 nm typical
Pulse Width	2 ns
Energy Per Pulse	3 $\mu$ J
Pulse Repetition Rate	200 kHz, up to 1 MHz
Output Power	600 mW
Optical Output Fiber	900um loose tube, FC/APC, 0.5 meter, SMF-28
Optical Tap Fiber	900um loose tube, FC/APC, 1 meter, SMF-28
Timing Jitter	$\leq$ 0.50 ns, rising edge of the TTL trigger to the Laser Output Pulse
Control and Communication Interface	RS-232, TTL voltage level
Dimension	90 x 70 x 15 mm
Power Input	+5 VDC +/- 5%
Electrical Interface Connector	PN: SAMTEC SMM-115-02-SD, Female 30-PIN
Operational Case Temperature Range	-5 to +60 $^{\circ}$ C
Mode of Operation	ACC (constant pump current control)

Proprietary Information of Nuphoton Technologies  
 Manufactured in the USA

info@nuphoton.com

+1-(951)-696-8366

+1-(951) 696-8394



Typical Laser Pulse Shape

**Electrical connector:**

Part number: SMM-115-02-SD

Pin No.	Description	Pin No.	Description
1	Vin	2	Vin
3	Vin	4	Vin
5	GROUND	6	GROUND
7	RS232 RX/UART TTL RX	8	RS232 TX/UART TTL TX
9	GROUND	10	GROUND
11	External Trigger TTL	12	-
13	HW-DISLDD TTL	14	INTERLOCK-TTL
15	CASE TEMP ALARM TTL	16	-
17	LASER TEMP ALARM TTL	18	LASER CURRENT ALARM TTL
19	TRIGGER ALARM TTL	20	LASER STAT ON/OFF TTL
21	GROUND	22	DGND
23	-	24	-
25	GROUND	26	GROUND
27	Vin	28	Vin
29	Vin	30	Internal Trigger TTL

Ordering Information:



800 Village Walk #316  
 Guilford, CT 06437  
 Ph: 203-401-8093

Email orders to: [sales@xsoptix.com](mailto:sales@xsoptix.com)  
 Fax orders to: 800-878-7282



Proprietary Information of Nuphoton Technologies  
 Manufactured in the USA

[info@nuphoton.com](mailto:info@nuphoton.com)

+1-(951)-696-8366

+1-(951) 696-8394