

# ERBIUM DOPED FIBER LASER

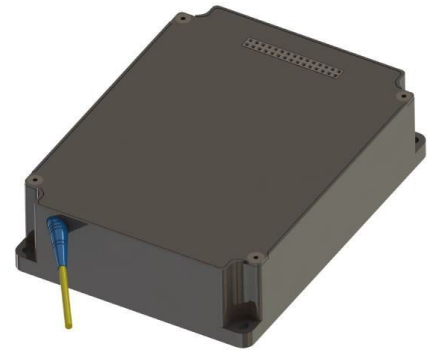


Model Number: **EDFL-Nano-1550-5-30-1.2-COL**

Product Code: **1705**

**Micro Processor Controlled**

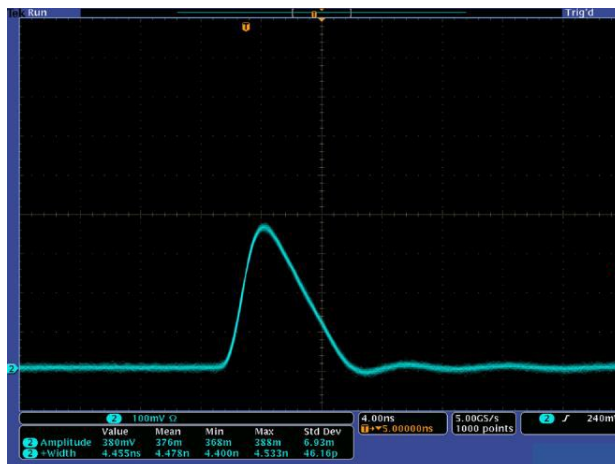
**Nanosecond Fiber Laser Module**



### Specifications:

Parameters	Specifications
Center Wavelength	1550 nm typical
Pulse Width	5 ns
Energy Per Pulse	Up to 30 $\mu$ J
Pulse Repetition Rate	40 kHz -600 kHz
Output Power	1.2 W
Optical Output	9.0 mm beam diameter
Output Beam Divergence	0.4 mrad typical
Timing Jitter	$\leq$ 0.50 ns, rising edge of the TTL trigger to the Laser Output Pulse
Control and Communication Interface	RS-232, TTL voltage level
Dimension	100 x 75 x 25 mm
Power Input	+12 VDC +/- 5%
Electrical Interface Connector	PN: SAMTEC SMM-115-02-SD, Female 30-PIN
Operational Case Temperature Range	-5 to +60 $^{\circ}$ C
Mode of Operation	ACC (constant pump current control)

Proprietary Information of Nuphoton Technologies  
 Manufactured in the USA



Typical Laser Pulse Shape

### Electrical connector:

Part number: SMM-115-02-S-D

Pin No.	Description	Pin No.	Description
1	+12V Vin	2	+12V Vin
3	+12V Vin	4	+12V Vin
5	GROUND	6	GROUND
7	RX	8	TX
9	GROUND	10	GROUND
11	CUSTOMER TRIGGER	12	-
13	HARDWARE -PUMP ENABLE / DISABLE	14	BURST OUT
15	CASE TEMPERATURE ALARM	16	-
17	LASER TEMPERATURE ALARM	18	LASER CURRENT ALARM
19	TRIGGER ALARM	20	LASER STATUS
21	GROUND	22	GROUND
23	-	24	-
25	GROUND	26	GROUND
27	+12V Vin	28	+12V Vin
29	+12V Vin	30	INTRL TRIGGER TO CONN

Ordering Information:



800 Village Walk #316  
 Guilford, CT 06437  
 Ph: 203-401-8093

Email orders to: [sales@xsoptix.com](mailto:sales@xsoptix.com)  
 Fax orders to: 800-878-7282

Proprietary Information of Nuphoton Technologies  
 Manufactured in the USA



info@nuphoton.com

+1-(951)-696-8366

+1-(951) 696-8394