

ERBIUM DOPED FIBER LASER

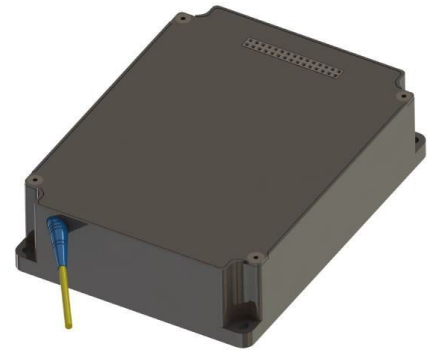


Model Number: **EDFL-Nano-LP-1550-2-4-800-COL**

Product Code: **1705**

Micro Processor Controlled

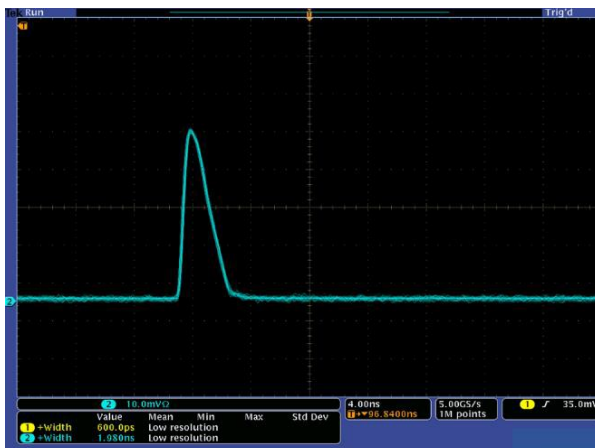
Nanosecond Fiber Laser Module



Specifications:

Parameters	Specifications
Center Wavelength	1550 nm typical
Pulse Width	2 ns
Energy Per Pulse	4 μ J
Pulse Repetition Rate	200 kHz – 1 MHz
Output Power	800 mW
Optical Output	3.0 mm beam diameter
Output Beam Divergence	0.8 mrad typical
Polarization Extinction Ratio	\geq 20 dB
Timing Jitter	\leq 0.50 ns, rising edge of the TTL trigger to the Laser Output Pulse
Control and Communication Interface	RS-232, TTL voltage level
Dimension	100 x 75 x 25 mm
Power Input	+12 VDC +/- 5%
Electrical Interface Connector	PN: SAMTEC SMM-115-02-SD, Female 30-PIN
Operational Case Temperature Range	-5 to +60 $^{\circ}$ C
Mode of Operation	ACC (constant pump current control)

Proprietary Information of Nuphoton Technologies
 Manufactured in the USA



Typical Laser Pulse Shape

Electrical connector:

Part number: SMM-115-02-S-D

Pin No.	Description	Pin No.	Description
1	+12V Vin	2	+12V Vin
3	+12V Vin	4	+12V Vin
5	GROUND	6	GROUND
7	RX	8	TX
9	GROUND	10	GROUND
11	CUSTOMER TRIGGER	12	-
13	HARDWARE -PUMP ENABLE / DISABLE	14	BURST OUT
15	CASE TEMPERATURE ALARM	16	-
17	LASER TEMPERATURE ALARM	18	LASER CURRENT ALARM
19	TRIGGER ALARM	20	LASER STATUS
21	GROUND	22	GROUND
23	-	24	-
25	GROUND	26	GROUND
27	+12V Vin	28	+12V Vin
29	+12V Vin	30	INTRL TRIGGER TO CONN

Ordering Information:



800 Village Walk #316
 Guilford, CT 06437
 Ph: 203-401-8093

Email orders to: sales@xsoptix.com
 Fax orders to: 800-878-7282

