

**SPECIFICATIONS**

AO Medium		TeO <sub>2</sub>
Acoustic Velocity		4.2 mm/μs
Active Aperture*	2.5 mm 'L' X	0.32 mm 'H'
Center Frequency (Fc)		200 MHz
RF Bandwidth	50 MHz @	-10 dB Return Loss
Input Impedance		50 Ohms Nominal
VSWR @ Fc		1.3 :1 Max
Wavelength		780-850 nm
Insertion Loss		3 % Max
Reflectivity per Surface		1 % Max
Anti-Reflection Coating		MIL-C-48497
Optical Power Density		250 W/mm <sup>2</sup>
Contrast Ratio		1000 :1 Min
Polarization		90 ° To Mounting Plane

**PERFORMANCE VS WAVELENGTH**

<b>Wavelength (nm)</b>	<b>830</b>
Saturation RF Power (W)	2.0
Bragg Angle (mr)	19.8
Beam Separation (mr)	39.6

**PERFORMANCE VS BEAM DIAMETER**

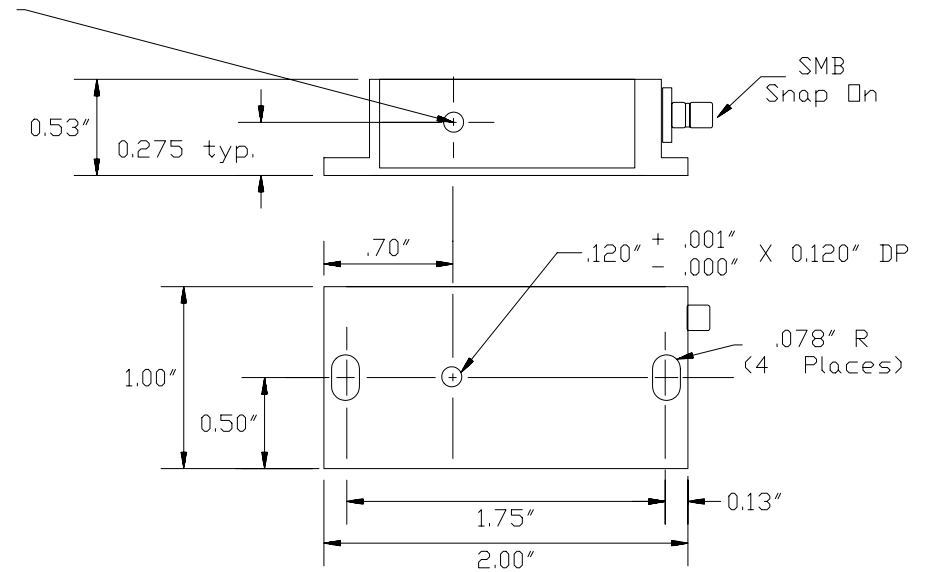
<b>Beam Diameter (μm)</b>	<b>150</b>
<i>at Wavelength (nm)</i>	830
Diffraction Efficiency (%)	70*
Rise Time (nsec)	29
Modulation Bandwidth	21.0
Beam Ellipticity	10

**For Reference  
Only**

\*Active Aperture: Aperture over which performance specifications apply.

**Outline Drawing:**

**Package Style 2**



**Ordering Information:**



800 Village Walk #316  
Guilford, CT 06437  
Ph: 203-401-8093

Email orders to: [sales@xsoptix.com](mailto:sales@xsoptix.com)  
Fax orders to: 800-878-7282

**Notes:**

\*Diffraction Efficiency at 1 Watt RF Power.

THIS DOCUMENT IS THE PROPERTY OF CRYSTAL TECHNOLOGY, INC. IT IS NOT TO BE REPRODUCED OR DISCLOSED IN WHOLE OR IN PART OTHER THAN BY EMPLOYEES CRYSTAL TECHNOLOGY AND ITS CONTRACTED REPRESENTATIVES AND DISTRIBUTORS. ANY EXCEPTION REQUIRES THE WRITTEN CONSENT OF AN AUTHORIZED REPRESENTATIVE OF CRYSTAL TECHNOLOGY.

TOLERANCES: .XX ± .01 .XXX ± .005	DR	A. Campi 6/27/2002	<b>Crystal Technology, Inc.</b> DESCRIPTION: <b>AOMO 3200-124</b>
MATERIAL:	CHK		
FINISH:	APP		
	APP		PART NUMBER: <b>97-01544-01</b> REV: <b>F</b> SHEET 1 OF 1