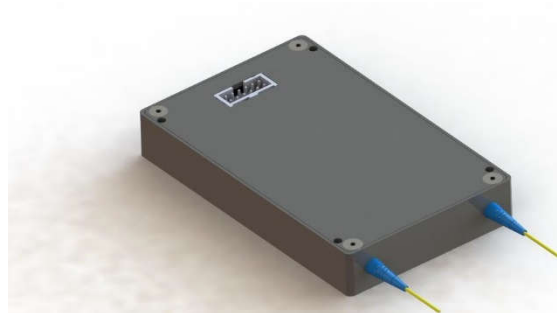


Model Number: **EDFA-CW-PM-C0-SubMR-30-20-FCA**

Product Code: **1828**

**Micro Processor Controlled EDFA**



**Specifications:**

Parameters	Specifications
Wavelength Range	1540 – 1565 nm, C-band Single Channel
Polarization Maintaining Property	Provided. Optical signal: slow axis light is amplified; fast axis light is blocked
Gain Flattening Filter	Not included
Output Power	+30 dBm, tested with 1550 nm, +10 dBm input power
Gain	20 dB, tested with 1550 nm, +10 dBm input power
Optical Input Fiber	900um loose tube, FC/APC, blue, 1 meter, PM fiber PN: SM15-PS-U25D
Optical Output Fiber	900um loose tube, FC/APC, red, 1 meter, PM fiber PN: SM15-PS-U25D
Input Power Monitoring	Not Provided
Output Power Monitoring Range	+12 dBm to +31 dBm
Output Power Measurement Accuracy	≤ +/- 0.5 dB, 1550 nm
Polarization Extinction Ratio	≥ 20 dB
Control and Communication Interface	RS-232, LVTTTL voltage level
Dimension	80 x 50 x 12mm
Power Input	+12 VDC +/- 5%
Electrical Interface Connector	PN: ZLTMM-106-62-L-D (SAMTEC), 12-PIN
Operational Case Temperature Range	-5 to +70 °C
Mode of Operation	ACC (constant pump current control)

# ERBIUM DOPED FIBER AMPLIFIER

**Electrical connector:**

Part number: ZLTMM-106-62-L-D

Pin No	Description	Pin No	Description
1	+12V Vin	2	+12V Vin
3	GROUND	4	GROUND
5	UART-RX LVTTTL	6	UART-TX LVTTTL
7	EDFA ENABLE/Interlock Signal LVTTTL	8	-
9	-	10	-
11	Module Status LVTTTL	12	Alarm LVTTTL

*Ordering Information:*



800 Village Walk #316  
 Guilford, CT 06437  
 Ph: 203-401-8093

Email orders to: [sales@xsoptix.com](mailto:sales@xsoptix.com)  
 Fax orders to: 800-878-7282

